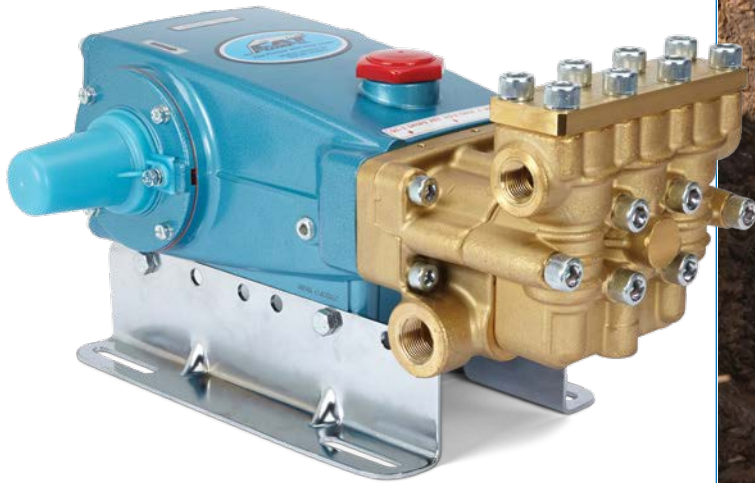


# MODEL 1580 PLUNGER PUMP



## 12 GPM—3,000 PSI

### Designed for Long Service Life

Cat Pumps model 1580 performance rating of 12 gpm/45.4 lpm at 3,000 psi/207 bar makes this pump a perfect fit for demanding applications such as hydroexcavating and heavy equipment cleaning. The 1580 is the ideal combination of high performance, compact footprint and competitive pricing.

Cat Pumps engineers have optimized every detail to produce a pump with incredible service life. Concentric, high-density polished solid plungers provide a true wear surface that results in incredible seal life. The drive-end uses matched connecting rods and oversized bearings to provide thousands of hours of trouble-free service. The 1580 is what you expect from Cat Pumps — high quality, dependable products backed by the industry's best

customer service and support.

#### Features:

- V-Packings and Lo-Pressure seals are completely lubricated and cooled, greatly increasing service life.
- Oversized crankshaft bearings with greater loading capacity provide longer bearing life.
- Optional drives — direct drive, pulley or clutch — meets a variety of application needs.
- Compact design for easy mounting in confined spaces.

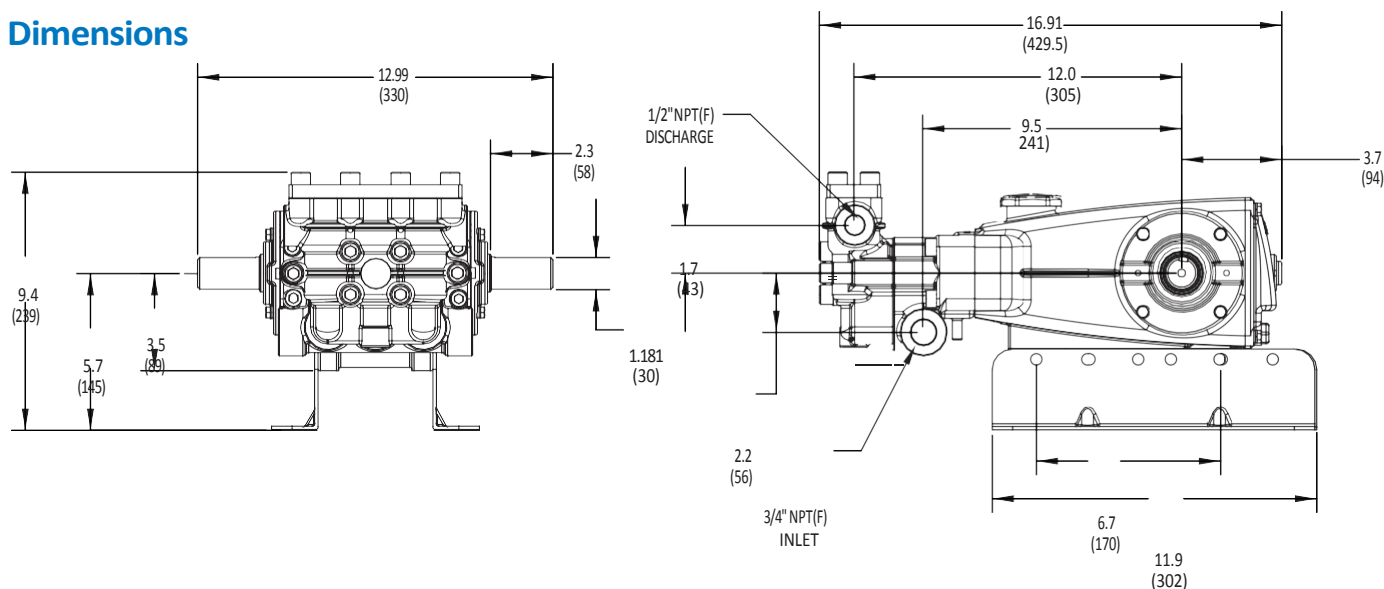
#### Typical Applications:

- Hydroexcavation
- Water Jetting
- Food Processing Cleaning
- Heavy Equipment Cleaning
- Multi-gun Washdown System

## Specifications

	US Measure	Metric Measure
<b>Flow</b>	12.0 gpm	45.4 lpm
<b>Pressure</b>	3,000 psi	207 bar
<b>RPM</b>	1180	1180
<b>Inlet Pressure Range</b>	Flooded – 70 psi	Flooded – 4.9 bar
<b>Max Liquid Temperature</b>	140°F	60°C
<b>Inlet Ports (2)</b>	3/4" NPT(F)	3/4" NPT(F)
<b>Discharge Ports (2)</b>	1/2" NPT(F)	1/2" NPT(F)
<b>Weight</b>	59.5 lbs	27 kg
<b>Dimensions</b>	16.91 x 12.99 x 7.24"	429.5 x 330 x 184 mm

## Dimensions



## Popular Accessories



**Unloader**

PN 39640  
1 – 21 GPM  
800 – 4000 PSI



**Pop-Off Valve**

PN 9940  
1 – 25 GPM  
1000 – 4000 PSI



**Pressure Gauge**

PN 32614  
0 – 6,000 PSI



**Inlet Strainer**

PN 07104  
1/2" NPTF  
10 GPM



# PIJTTERSEN

Pijtersen B.V.  
Stavangerweg 14A  
9723 JC Groningen  
Tel. : +31 (0)508-200963  
BTW: NL002166811B01

KVK: 01013855  
BIC: ABNANL2A  
IBAN: NL56ABNA0482164727  
E-Mail: [info@pijtersen.nl](mailto:info@pijtersen.nl) / [info@catpumps.nl](mailto:info@catpumps.nl)  
Internet: [www.pijtersen.nl](http://www.pijtersen.nl) / [www.catpumps.nl](http://www.catpumps.nl)